



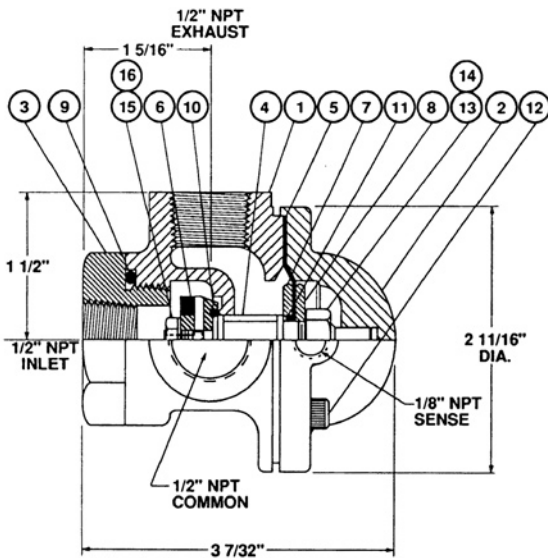
DESCRIPTION

MODEL A224 3-WAY AUXILIARY PILOT

- Three port, two position, hydraulically operated
- 1/2" Ports
- All parts replaceable while mounted on valve
- Rubber to metal seat
- Orifice supply in actuated position for use with modulating controls
- Bronze or stainless steel construction

The A224 is an auxiliary pilot operated by a smaller ported control such as a float, altitude or solenoid pilot. Its purpose is to provide accelerated opening and closing action of the main valve. It is typically installed with its Inlet port connected to main valve inlet, its Exhaust port connected to main valve outlet, and its Common port connected to the main valve cover (bonnet). The pilot is shifted by the presence or absence of pressure on its diaphragm. When actuated to open the valve (diaphragm pressurized), the A224 has an integral supply orifice that supplies hydraulic pressure to a pilot system when a modulating pilot such as rate of flow, pressure reducing or pressure sustaining control is used. It can also be used for straight on/off operation of the main valve.

MODEL A224 MATRIX



OPERATION MATRIX

A224 COVER	PORTS CONNECTED	MAIN VALVE ACTION
Vented	Inlet > Common	Closes
Pressurized	Common > Exhaust	Opens

MATERIAL	PART NUMBER	PORT SIZES NPT
Bronze, Buna-N	230101	1/2
Stn. Steel, Buna-N	230701	1/2

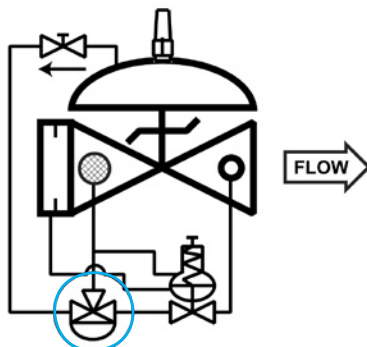
- Model A224
3-Way Auxiliary Pilot:
1. Body
 2. Bonnet
 3. Adaptor
 4. Stem
 5. Diaphragm
 6. Seat Plug
 7. Lower Diaphragm Plate
 8. Upper Diaphragm Plate
 9. O-ring
 10. O-ring
 11. O-ring
 12. SKT HD Capscrew
 13. Hex Nut
 14. Lock Washer
 15. Hex Nut
 16. Lock Washer

MATERIALS

- Bronze B61
Stainless Steel ASTM A743/CF8-M
Elastomers (diaphragm, seat disc, o-rings)
- Buna-N (Std.)
 - Viton® (Opt.) Viton is a registered trademark of DuPont Dow Elastomers
 - EPDM (Opt.)

SCHEMATIC SYMBOL

The Model A224 is shown on OCV Valve Schematics as:



EXAMPLE: Shown here on a MODEL 119-5 Filter Separator Valve with Rate of Flow Valve.

MAINTENANCE

Rubber components are typically the only parts that may require periodic replacement.

These are available in kits consisting of the diaphragm, the seat disc and all O-rings.

- | | | |
|------------|---|---------------|
| Buna-N Kit | - | Part # 930001 |
| Viton® Kit | - | Part # 930101 |
| EPDM Kit | - | Part # 930401 |

TOLL FREE 1.888.628.8258 • phone: (918)627.1942 • fax: (918)622.8916 • 7400 East 42nd Place, Tulsa, OK 74145
email: sales@controlvalves.com • website: www.controlvalves.com

Global performance. Personal touch.